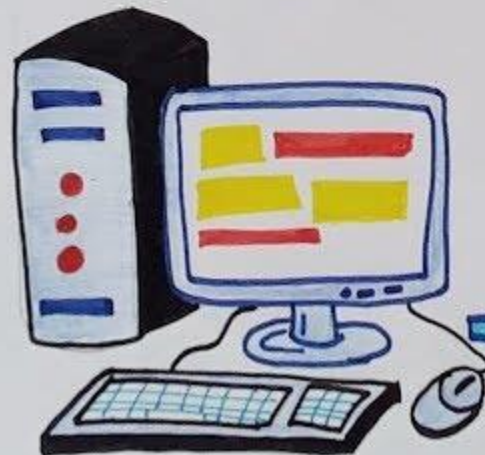




# CLASS - VIA COMPUTER HOLIDAY HOMEWORK 2022-23

By: Sanjay Sir





# Summer Holiday

**What's a Holiday Without Homework?**

Summer is here and with it come your amazing holidays! But what's a holiday without some homework?

So, we've decided to give you a fun filled activities this summer!



please follow  
the instructions

1. Prepare a separate file with title:  
Vidya Devi Jindal School, Kosikalan  
"ART INTEGRATED PROJECT"  
Subject: COMPUTER  
Submitted By: \_\_\_\_\_ Class: \_\_\_\_\_
2. Use A4 size coloured sheets.
3. Use any good quality plastic file .
4. File should be well decorated.
5. Finish your homework within summer vacations and submit it when school reopens.
6. All assignments should be hand written.
7. Marks will be awarded for the file.
8. Surprise gift hamper will be given to best 3 projects.



# Assignment -1

## A. Fill in the blanks:

- a. \_\_\_\_\_ are the only intelligent creatures on this planet.
- b. AI-powered machines rely on \_\_\_\_\_ and \_\_\_\_\_ fed into the system.
- c. The term Artificial Intelligence was first coined in 1965 by \_\_\_\_\_.
- d. Intelligence comes from \_\_\_\_\_.
- e. Intelligence is used to draw \_\_\_\_\_ & \_\_\_\_\_.
- f. A \_\_\_\_\_ computer is a general term for any type of handheld computer.
- g. A \_\_\_\_\_ computer is a large, powerful computer that handles processing for many users simultaneously.
- h. \_\_\_\_\_ designed the first supercomputer "CDC 6600".
- i. World's fastest computers \_\_\_\_\_.
- j. Computer used during travelling \_\_\_\_\_.

## B. True/False:

- a. The Turing test was originally called the imitation game.
- b. Sophia is the world first robot citizen.
- c. Fisher Ada is known as the father of AI.
- d. Verbal Intelligence means good at reading a map and designing things.
- e. Dolphins have sonars built into their DNA.
- f. Mainframe computers are used at home.
- g. Embedded devices are not usually programmable by a user.
- h. Supercomputers are used for scientific researches.
- i. Embedded systems have limited features.
- j. PC is a mainframe computer.

## Assignment -2

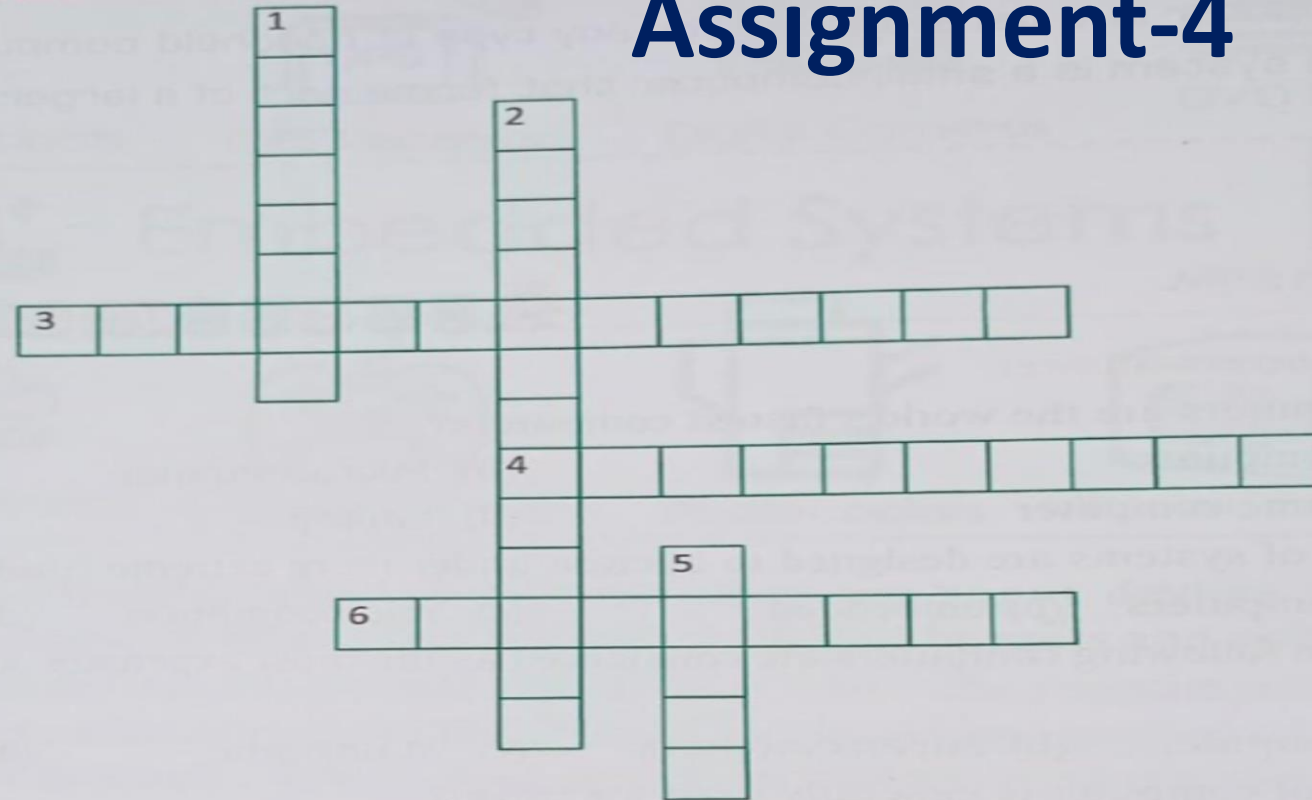
Draw a tree diagram representing "Types of Artificial Intelligence"

## Assignment -3

Cut and paste pictures of examples of at least ten various machines or apps using Artificial Intelligence.

Complete the crossword.

# Assignment-4



## ACROSS (→)

3. The biggest and most powerful computer.
4. Very large and expensive computer capable of supporting hundreds, or even thousands of users simultaneously.
6. Category of laptops that is slimmer and lighter.

## DOWN (↓)

1. A small computer that forms part of a larger system, device or machine.
2. A computer that has a microprocessor chip (or multiple microprocessors) as its Central Processing Unit (CPU).
5. It is the first supercomputer built by India.

Note: Draw the crossword and solve it.

# Assignment-5

- (i) Write an article on how Artificial Intelligence can make our life easier.
- (ii) Create a collage of pictures of different types of computers (write their names)

